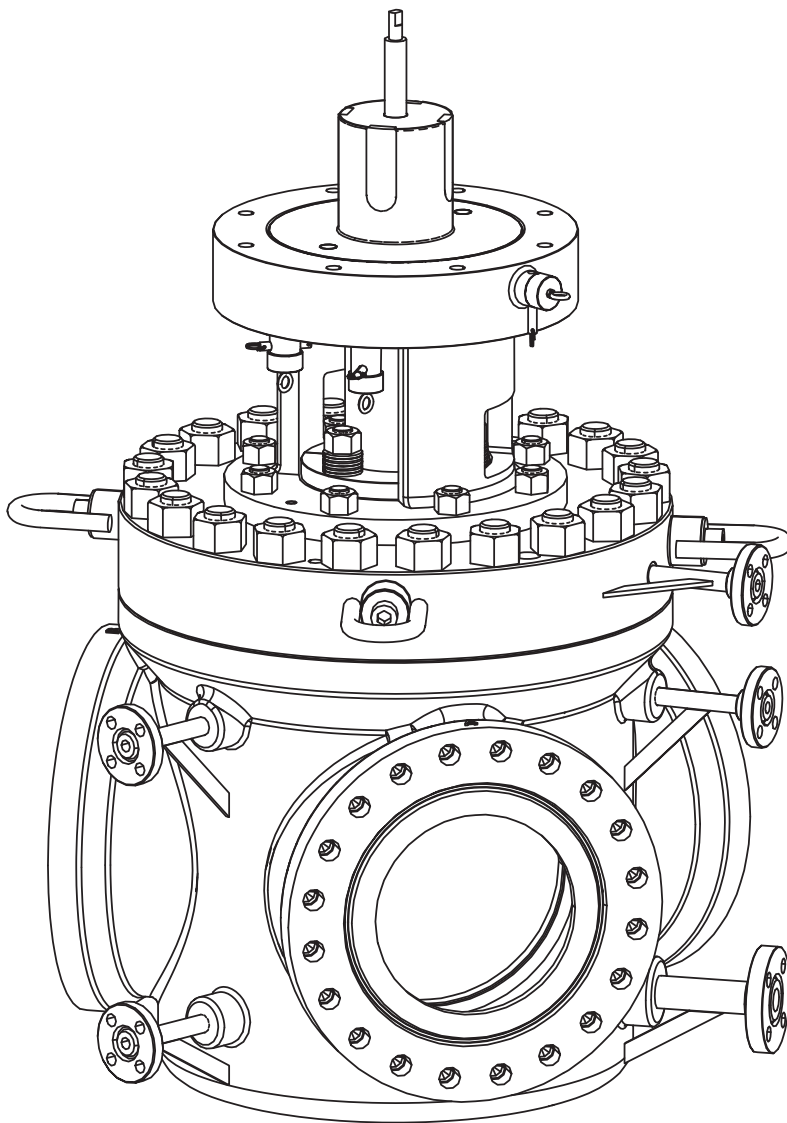

Installation, Operation and Maintenance Manual

for the
Coker Switching Valve
ASME Class 600 / 900



**PREPARE THE VALVE
FOR INSTALLATION**

**INSTALL THE VALVE
PROPERLY**

**OPERATE THE VALVE
PROPERLY**

**PURGE AND MAINTAIN
THE VALVE FOR
OPTIMAL OPERATION
AND PERFORMANCE**

MOGAS[®]
A Flowserve Company

Important User Information

HOW TO READ THIS MANUAL

All information within this manual is relevant to the safe and proper care of your MOGAS switching valve. The following are examples of instructional information used throughout this manual.

00

REMOVE STEM PACKING

Using a small pick or scribe, carefully remove packing rings **9A** and anti-extrusion rings **9B** from around stem.

Note: It is recommended that operator installation only be performed by authorized MOGAS service personnel.

Identifies and explains sequential procedure to be performed.

Bold numbers correspond with items shown in the Valve Item Reference Number sections.

Note provides important information related to a procedure.

SAFETY INFORMATION

It is important to read and follow these safety instructions.



WARNING!

Do not perform this task under line pressure. Make sure the line is **not** under pressure.

Indicates a hazardous situation which, if not avoided, could result in death or serious injury.



CAUTION!

Do not install valve for pressures or temperatures higher than rated.

Indicates a hazardous situation which, if not avoided, could result in minor or moderate injury.

NOTICE

The valve operator should be equipped with position indicators for correct ball bore position.

Indicates a potential situation which could result in damage to the valve or may void the warranty.

Contents

IMPORTANT VALVE INFORMATION.....	4
RECEIVING AND INSPECTION.....	5
VALVE ITEM NUMBERS	6
INSTALLATION – ACTUATOR ADAPTION	8
INSTALLATION	12
OPERATION.....	14
PURGING AND DRAINING	16
MAINTENANCE	17
DISASSEMBLY.....	18
EVALUATION AND REWORK	23
RE-ASSEMBLY	24
STORAGE	30
RETURN MERCHANDISE AUTHORIZATIONS.....	31

Important Valve Information

1 PURPOSE

The MOGAS switching valve is a highly engineered product that has adopted many successful features utilized in severe coking applications.

MOGAS has added several customized safety features into this valve design, extending the highest degree of “safety-first” approach.

Please review this document in its entirety to understand the MOGAS switching valve functionality.

2 VALVE CONFIGURATION

The MOGAS switching valve requires an operator (electric actuator with worm gear) to perform switching functions.

Each switching valve configuration may be slightly different due to customer specifications.

Note: Review any job-specific or general arrangement drawings provided for your configuration details.

NOTICE

Information throughout this manual is based on a valve / actuation package recommended and provided by MOGAS.

3 VALVE INFORMATION

Valve information is provided on a nameplate **89** as shown.

The nameplate is wire-fastened to body for easy access.

89

MOGAS		USA	YEAR OF	MODEL
B16.34			MAKE	
RATING		PN (#)	SIZE	DN (")
<input type="radio"/>	END TYPE		BORE	mm (")
STEM		BALL	SEAT	
MAX RATED		BAR (PSIG) @ 38°C (100°F)	
PRESSURE		BAR (PSIG) @ °C (°F)	

Receiving and Inspection

1 REMOVE VALVE

Valves are shipped in seaworthy export packed wooden crates that are plastic lined.

Carefully remove the valve (and operator, if supplied) from the shipping crate or pallet by using lifting lugs with spreader bar.



CAUTION!

Do not lift by the operator alone. Lift using all four lifting lugs. Use a spreader bar to avoid damage or contact with operator or motor.

2 INSPECT VALVE EXTERNALLY

Inspect the general condition of the valve (and operator, if supplied) for any potential shipping damage.

Review the valve manual, assembly drawing with the bill of materials, and the operator manual (if supplied) shipped with the valve.

3 INSPECT VALVE INTERNALLY

Remove protective covers from valve ends. Inspect valve internally for shipping debris or damage.

Replace protective covers until ready for installation.

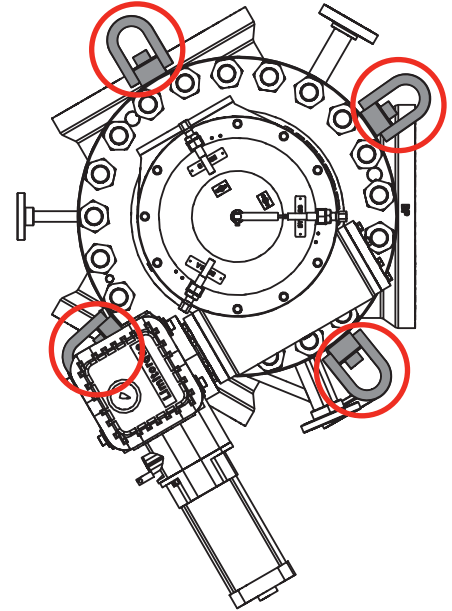
4 VERIFY OPERATOR

If the valve was ordered with an operator from MOGAS, it should arrive pre-assembled and tested from the factory. If already assembled, continue with the valve installation.

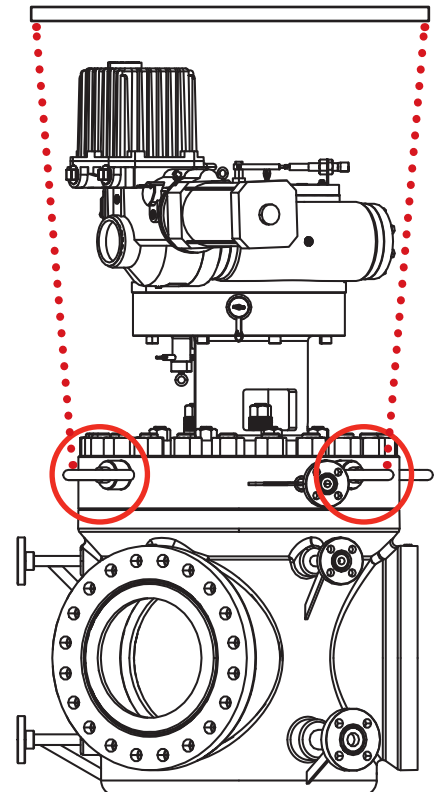
If the valve **does not** include an operator, the appropriate adaptor and operator **must** be installed to cycle the valve prior to installation.

Note: It is recommended that operator installation only be performed by authorized MOGAS service personnel.

LIFTING LUG LOCATIONS

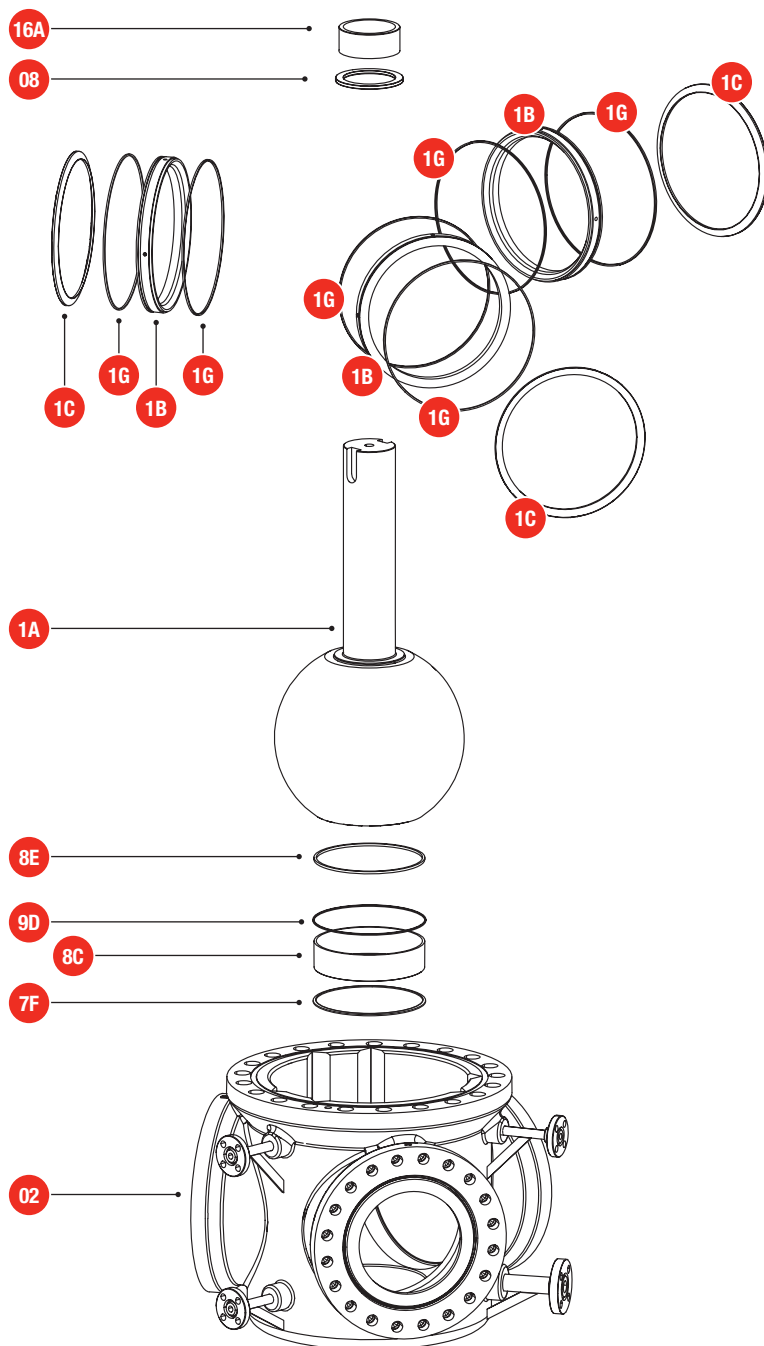


SPREADER BAR FOR LIFTING

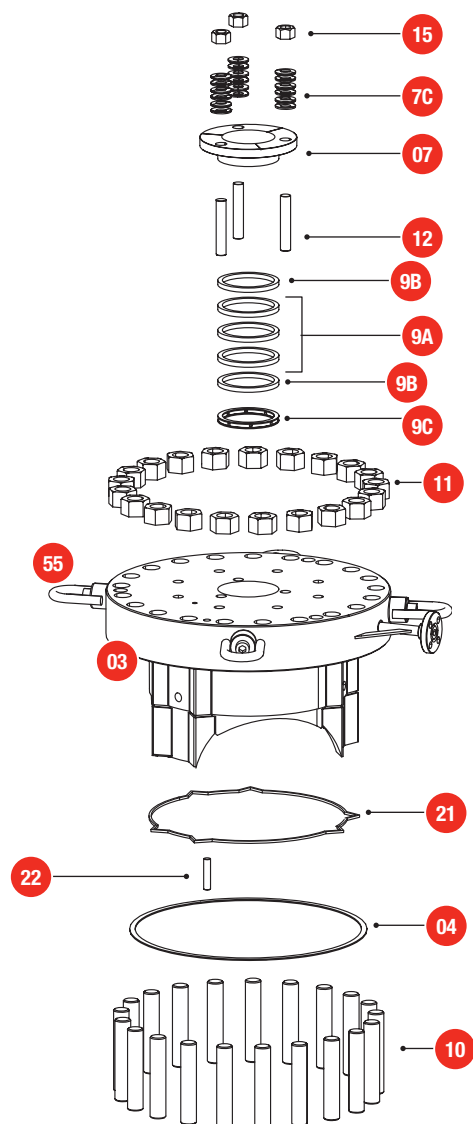


Valve Item Numbers

BODY, BALL/STEM, AND SEATS



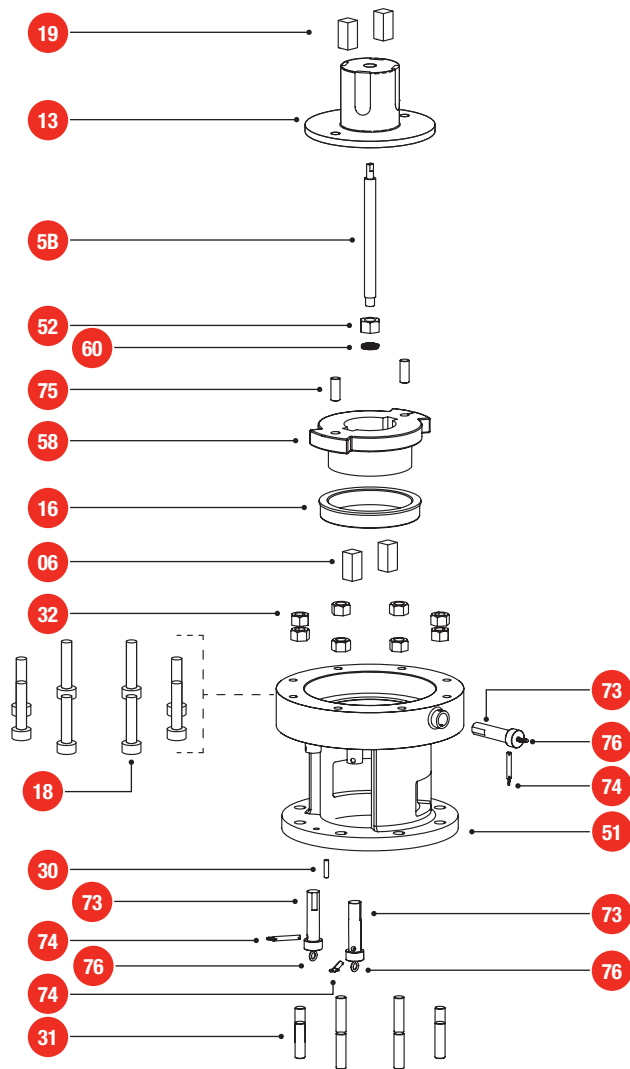
BONNET AND PACKING



Note: Contact MOGAS or a MOGAS Authorized Repair Center to determine the spare parts and quantities required for your specific circumstance.

Valve Item Numbers

TOP WORKS



Valve Item Number Reference

Reorder Item #'s	Description	Qty	Soft Goods Kit	Trim Change Kit
1A	BALL WITH STEM	1	—	•
1B	SEAT RING	3	—	•
1C	SPRING DISC	3	—	•
1G	SEAT OUTER SEAL	6	•	—
02	BODY	1	—	—
03	BONNET	1	—	—
04	BODY GASKET	1	•	•
5B	INDICATOR ROD	1	—	—
06	STEM KEY	2	—	—
07	GLAND FLANGE	1	—	•
7C	LIVE LOAD SPRINGS	VARIES	—	—
7F	BALL SLEEVE SPRING	1	—	—
08	STEM SEAL BEARING	1	—	•
8C	BALL SLEEVE	1	—	—
8E	BALL SLEEVE BEARING	1	—	—
9A	STEM PACKING	3	•	•
9B	ANTI-EXTRUSION RING	2	•	•
9C	LANTERN RING	1	•	•
9D	BALL SLEEVE OD SEAL RING	1	•	•
10	BODY STUD	VARIES	—	—
11	BODY NUT	VARIES	—	—
12	GLAND STUD	3	—	—
13	STEM ADAPTOR	1	—	—
15	GLAND NUT	3	—	—
16	FLANGE BUSHING	1	—	—
16A	STEM SEAL SLEEVE	1	—	•
18	ACTUATOR SOCKETHEAD SCREWS	VARIES	—	—
19	ACTUATOR KEYS	2	—	—
21	GRAPHITE SEAL	1	•	•
22	ALIGNMENT PIN, BONNET	1	—	—
30	ALIGNMENT STUD	1	—	—
31	MOUNTING FLANGE BOLTING	8	—	—
32	MOUNTING FLANGE NUT	8	—	—
51	MOUNTING FLANGE ADAPTOR	1	—	—
52	HEX NUT, INDICATOR ROD	1	—	—
55	HOIST RING	4	—	—
58	STOP PLATE	1	—	—
60	WEDGE LOCK WASHER	1	—	—
73	STOP PIN	3	—	—
74	QUICK-RELEASE PIN	3	—	—
75	PIN, STEM ADAPTOR	2	—	—
76	EYE BOLT	3	—	—
89	NAMEPLATE (SEE PG 4)	1	—	—

Installation

Actuator Adaption

These procedures apply to worm gear actuation (360°) supplied by MOGAS or a MOGAS authorized distributor. Otherwise, refer to the actuator manufacturer's manual for specific operator / actuator procedures.

Note:

Valve item numbers shown in **bold** correspond with items shown in the **Valve Item Reference Number, Actuator Adaption** section (pages 6 and 7) of this document.



CAUTION!

It is **extremely important** to follow these steps to ensure maximum valve performance.

THIS WILL AFFECT THE VALVE WARRANTY.

1 VALVE ORIENTATION

Secure the valve in a horizontal position.

The ball's bore should be open to the outlet and aligned with the groove on the verticle stem.

2 STEM ORIENTATION

A groove cut in the stem is to indicate the outlet port of the ball. The groove should be used to verify the position of the ball with the three outlet ports on the body.

3 MOUNTING FLANGE ADAPTOR

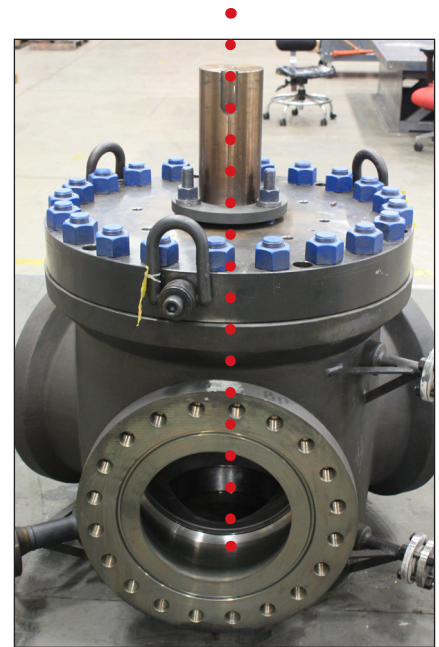
Install mounting flange adaptor **51** to the bonnet and attach mounting flange bolts **31** and nuts **32**.



CAUTION!

Torque the bolting per the specifications included with the **test certificate** for each individual valve serial number.

THIS WILL AFFECT THE VALVE WARRANTY.



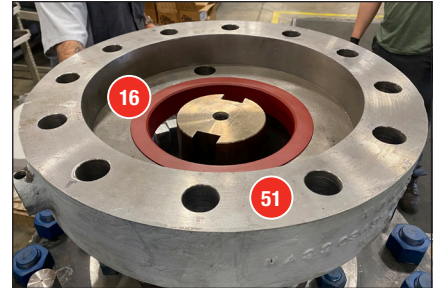
Installation

Actuator Adaption

4 FLANGE BUSHING

Insert the flange bushing **16** on mounting flange adaptor **51**.

If necessary, tap into place using a hammer and a brass or aluminum rod or wooden block.



5 STOP PLATE

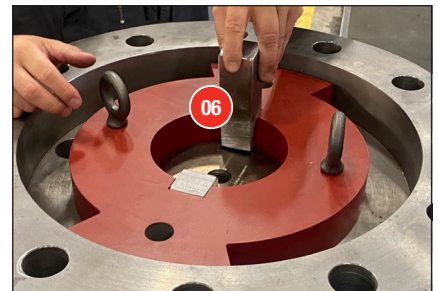
Place stop plate **58** into the mounting flange adaptor **51**.

Verify that the valve ports and actuator indication are in the same operating position.



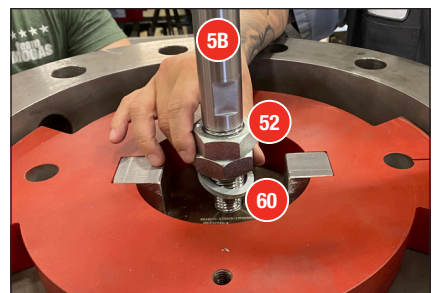
6 VALVE KEYS

Inset two (2) stem keys **06** into stem keyways.



7 INDICATOR ROD

Insert indicator rod **58**, hex nut **52**, and lock washer **60**.

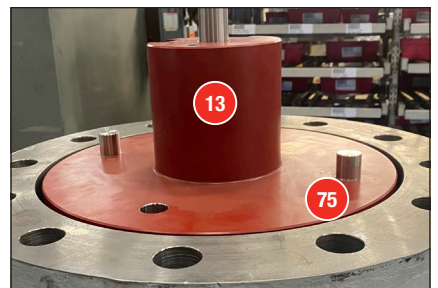


8 STEM ADAPTER

Align the stem adaptor **13** so the pin holes align with the stop plate **58** holes. Insert stem adapter pins **75**.

Note:

The keyways on the stem adaptor will align with the keyways on the actuator once added.



Installation

Actuator Adaption

9 MOUNT ACTUATOR

Lower actuator and align actuator keys **19** in the stem adaptor **13** with key way of the actuator.

Carefully place the actuator on the mounting flange adaptor **51**.

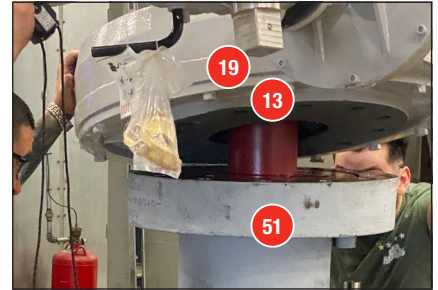


CAUTION!

Do not force actuator onto stem adaptor. Proper alignment is critical to ensure the actuator slides gently into position.

If stem is forced into valve, severe damage could occur.

THIS WILL AFFECT THE VALVE WARRANTY.



10 INSTALL ACTUATOR SOCKETHEAD SCREWS

Install actuator sockethead screws **18** and torque as required.



CAUTION!

If the actuator is supplied by MOGAS, refer to the torque values in the **test certificate** provided for each individual valve serial number.

Otherwise, refer to the manufacturer's specifications.

THIS WILL AFFECT THE VALVE WARRANTY.



11 INSTALL ACTUATOR KEYS

Insert two (2) actuator keys **19** into stem adaptor keyway.

Note:

Some Installations may require inserting the key through an access port in the actuator after actuator is in position.

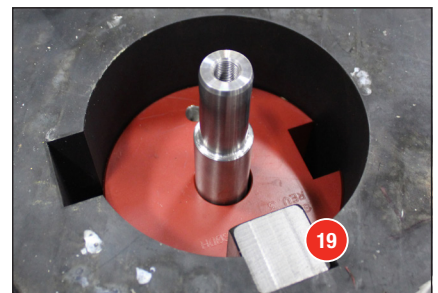


CAUTION!

Ensure actuator keys **19** length is fully engaged.

Use only actuator keys **19** provided by MOGAS.

THIS WILL AFFECT THE VALVE WARRANTY.



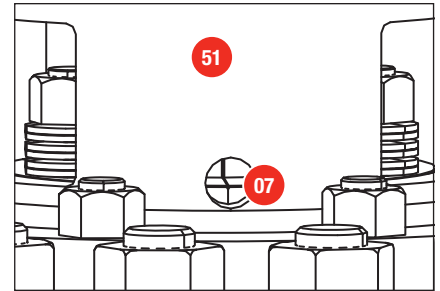
Installation

Actuator Adaption

12 OPERATING POSITION

Verify that the ball **1A** bore is open to port and that it aligns with indicator rod **5B** for correct operating position.

If position indicators are not visible, the scribe line on gland flange **07** can be used to determine the position of the ball bore. When viewed through the mounting adaptor opening **51**, the stem scribe line and gland flange scribe line should align.



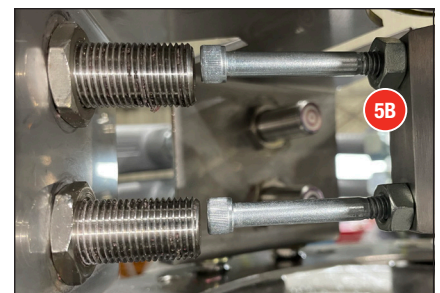
13 VERIFY OPERATION

The actuator should be stroked manually to ensure that the ball **1A** is rotating properly, and the ball position matches the indicators on the actuator. If the ball requires alignment, the actuator stops should be reset per the manufacturer's specifications.



14 PROXIMITY SWITCHES

Once the actuator is installed, attach the position tripper to indicator rod **5B**. Install the proximity switches in their designated position. Once the proximity switches and trigger are installed, manually stroke the valve to ensure that there is no interference between the switches and the indicator rod. Manually move the valve to each port and adjust the proximity switch appropriate for that individual port to indicate the proper position.



CAUTION!

Misalignment can result in valve under- or over-stroke, creating a potential leak path.

THIS WILL AFFECT THE VALVE WARRANTY.

Installation



CAUTION!

Do not install valve for pressures or temperatures higher than rated.

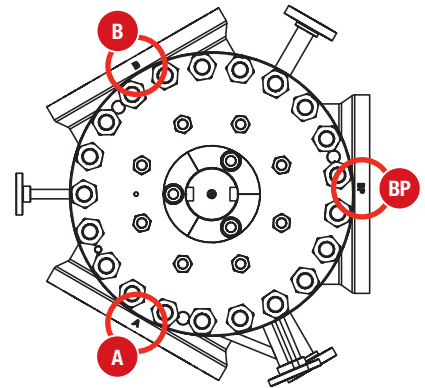
THIS WILL AFFECT THE VALVE WARRANTY.

1 ORIENTATION

Each port description shall be stenciled on the flange and labeled on top of the actuator, to identify its direction of flow, such as: **(A)** Drum A, **(B)** Drum B, and **(BP)** Bypass.

The valve can be installed with the stem in the horizontal, vertical or angled position. The preferred installation position is vertical. For motorized gearbox operators, the mounting hardware shall sufficiently support the gearboxes without additional support(s).

If the valve is positioned in the horizontal or angled position, make sure the drain ports are positioned at an angle that will allow the coke to be drained off the during switching process.



CAUTION!

The entire valve assembly may require support(s) due to its weight. It is recommended that the customer review the valve assembly and determine its proper support system.

THIS WILL AFFECT THE VALVE WARRANTY.

2 PIPING

Allow for sufficient flexibility in piping system for thermal growth and mechanical strains on pipe work.

Install purge / drain piping in accordance to customer's normal work practices.

Orientation and purge port / drain connection sizes and types shall be available on customer valve assembly drawing.

Installation

3 OPERATOR ADAPTION / ACTUATION



CAUTION!

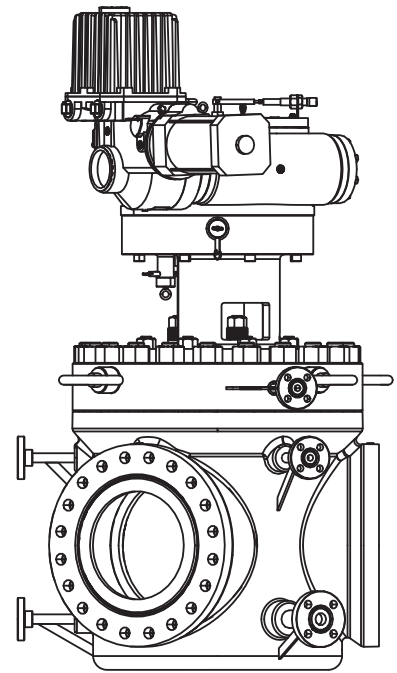
If the valve was supplied with an operator, the operator must **not** be re-oriented without prior notice to MOGAS or without supervision by authorized service personnel.

THIS WILL AFFECT THE VALVE WARRANTY.

If the valve **does not** include an operator, the appropriate adaptor and operator **must** be installed to perform switching operations.

All new operators will require machining modifications to the top plate for indicator rod, limit switches and actuator key slots.

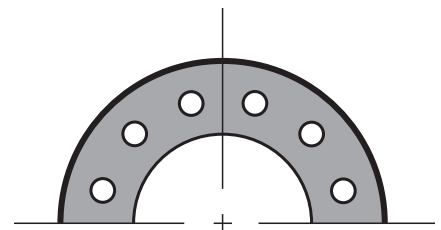
Note: It is recommended that operator installation only be performed by authorized MOGAS service personnel.



4 SECURE VALVE IN-PLACE

Install flange gaskets and bolting per customer requirements.

Note: MOGAS valve flanges are supplied in the customary "straddle centerline" hole orientation, unless otherwise specified.



Straddle Centerline Hole Orientation

5 VERIFY OPERATION

To verify operation after installation:

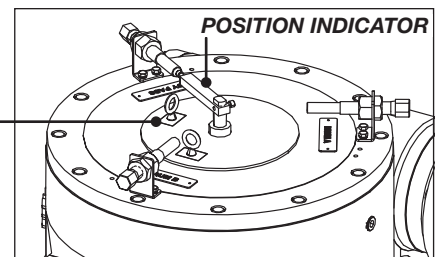
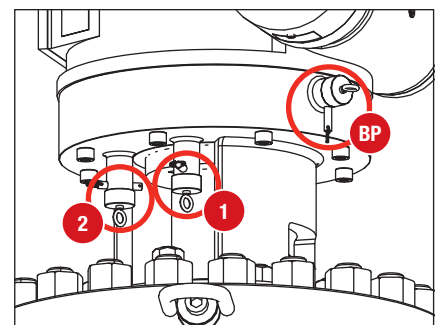
Disengage all position stop pins **1**, **2**, and **BP**.

Ensure the actuator keys are engaged.

Cycle valve from port **A** to **B** to **BP**, and then from **BP** to **B** to **A**.

Repeat procedure **2 times**.

Note: Check indicator rod to ensure ball bore position. All indicator locations should match ball bore position.



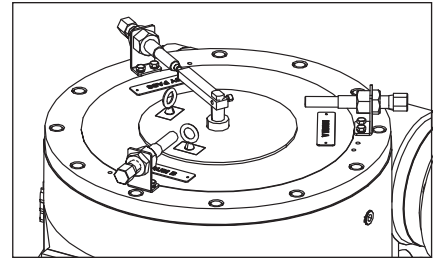
NOTICE

Due to the potential for packing consolidation, verify proper packing torque adjustment prior to placing the valve in service. If bolting torque is lower than specified values on the **test certificate** provided for each **individual** valve serial number, re-torque bolting as necessary.

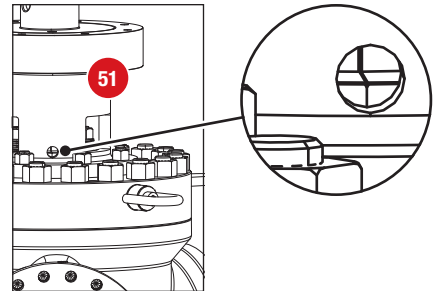
THIS WILL AFFECT THE VALVE WARRANTY.

1 LOCATE POSITION INDICATORS

The valve operator should be equipped with position indicators for correct ball bore position.



If position indicators are not visible, the scribe line on gland flange **07** can be used to determine the position of the ball bore. When viewed through the mounting adaptor opening **51**, the stem scribe line and gland flange scribe line should align.



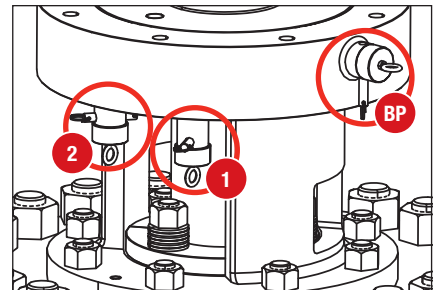
2 LOCATE POSITIONAL STOP PINS

The installed operator performs all switching functions between drums **A**, **B**, and **BP**.

Positional stop pins are used to prevent switching once a position is selected. All pins and keys are tethered to the mounting flange via cables.

Note: Positional stops include Bypass (BP) Lock/Stop Pin, Lockout Pin 1 and Lockout Pin 2.

Secure **lock-in** pins are provided, and should be used once lockout pins are engaged into their proper location.



Operation



CAUTION!

It is **extremely important** to follow these steps to ensure maximum valve performance and safety.

THIS WILL AFFECT THE VALVE WARRANTY.

3

START-UP

Disengage **all** positional stops.

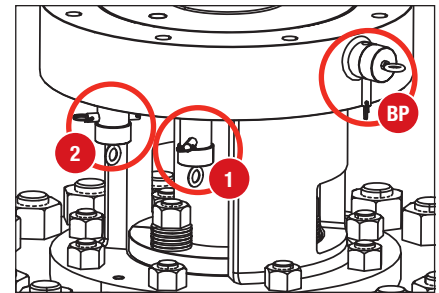
Rotate bore of ball to desired starting position.
(Drum **A** or **B**.)

Insert **BP** Lock/Stop Pin fully into position, to prevent accidental switching to Bypass Port.

For Drum **A** operation, insert Lockout Pin **1** and keep **BP** Lock/Stop Pin in locked position.

For Drum **B** operation, insert Lockout Pin **2** and keep **BP** Lock/Stop Pin in locked position.

Note: Once starting position is set and lockout pins are engaged, use **lock-in** pins to secure positions.



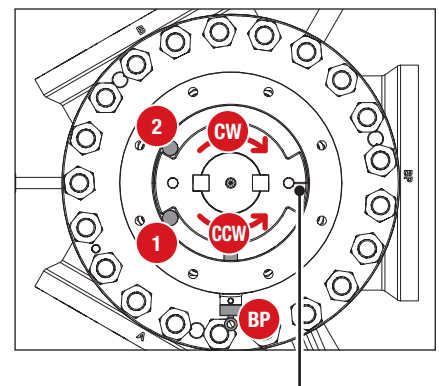
4

SWITCHING OPERATIONS

This table provides a reference for all switching operations between Drum **A**, **B**, and **BP**.

Switching Process	Disengage Pins	Ball Rotation	Engage Pins
A to B	1 + BP	CW	2 + BP
B to A	2 + BP	CCW	1 + BP
A to BP	1 + BP	CCW	1 + 2
B to BP	2 + BP	CW	1 + 2
BP to A	1 + 2	CW	1 + BP
BP to B	1 + 2	CCW	2 + BP

INNER VIEW OF STOP PLATE AND PINS DURING SWITCHING.



GROOVE INDICATES PORT SELECTION.

Purging and Draining



CAUTION!

It is **extremely important** to follow these steps to ensure maximum valve performance and safety.

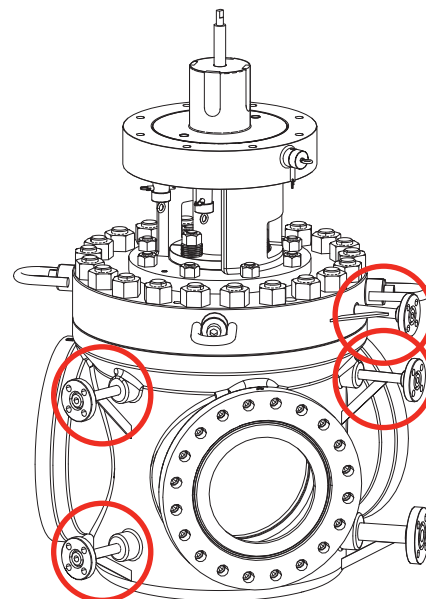
THIS WILL AFFECT THE VALVE WARRANTY.

PURGING

MOGAS coker switching valves are typically equipped with steam purges.

To prevent valve lockup and ensure continuous operation of these valves, it is highly recommended that the purging process be **continuous** in the body cavity area.

Note: Review any job-specific or general arrangement drawings provided for purge locations and procedures.



TYPICAL PURGE LOCATIONS

DRAINING

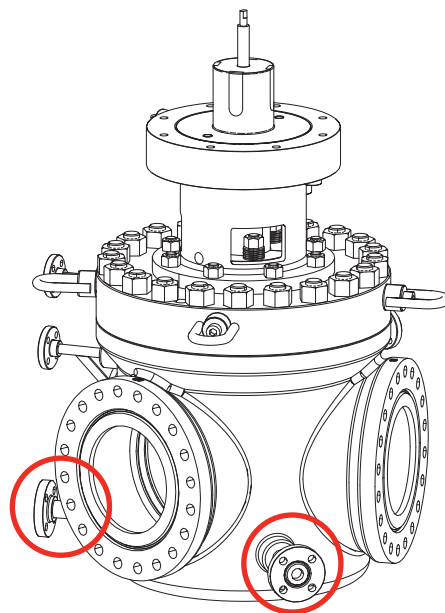
MOGAS coker switching valves are typically equipped with drain ports, which will allow any coke and water from the steam buildup in the body cavity area to be flushed out at the end of each switching cycle.

The drains are to be opened, and remain open for 15 minutes after each cycle.

Note: Review any job-specific or general arrangement drawings provided for drain locations and procedures.

NOTICE

Some MOGAS switching valves may have automated purge and drain procedures. Consult a MOGAS representative to learn more about these options.



TYPICAL DRAIN LOCATIONS

Maintenance



CAUTION!

It is **extremely important** to follow these steps to ensure maximum valve performance.

THIS WILL AFFECT THE VALVE WARRANTY.

VERIFY BOLTING TORQUE

After the first exposure to elevated temperature and / or pressure, and the valve has completely cooled, verify bolting torque at these locations:

- Packing gland flange
- Body to bonnet connection
- Actuator to valve mounting

Check the bolting at these same locations periodically.



CAUTION!

If bolting torque is lower than specified values on the **test certificate** provided for each **individual** valve serial number, re-torque bolting as necessary.

THIS WILL AFFECT THE VALVE WARRANTY.

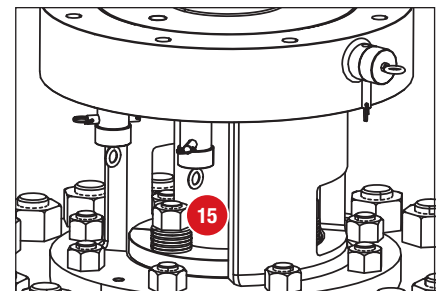
ACTUATOR LUBRICATION

Keep hydraulic, pneumatic and worm gear actuators fully lubricated according to actuator manufacturer's specifications.

FIELD MAINTENANCE

If a packing leak develops, verify that the packing gland nuts **15** are properly torqued to specified values on the **test certificate** provided for each **individual** valve serial number.

Note: There should be no reason to replace the stem packing during normal operation. The packing should be replaced when the valve is removed from service for repair. Replace with factory recommended packing to maintain appropriate compression.



Disassembly



CAUTION!

If you disassemble, rework and re-assemble this ball valve, **YOU WILL VOID YOUR WARRANTY.**

Note: To replace valve internal parts, the valve may be repaired *inline* or **removed** from the line.

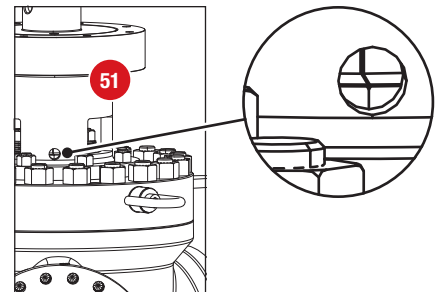
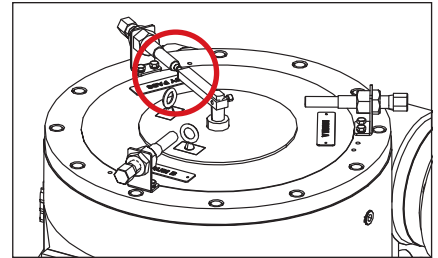
1 ALIGN BALL BORE

Before removing bonnet **03**, ensure the ball bore is in alignment to any of three ports.

NOTICE

Operator packages will vary based on customer requirements. Operators should be equipped with position indicators for correct ball bore position.

If position indicators are not visible, the scribe line on the gland plate **07** can be used to determine the position of the ball bore. When viewed through the mounting adaptor opening **51**, the stem scribe line and gland flange scribe line should align.



2 MARK COMPONENTS

Prior to disassembly, mark any matching components with a marker, tape, etc. for ease of re-assembly.

Disassembly

3 REMOVE OPERATOR ASSEMBLY

Detach the indicator from indicator rod **5B** using socket head screw.

Remove operator keys by lifting straight up.

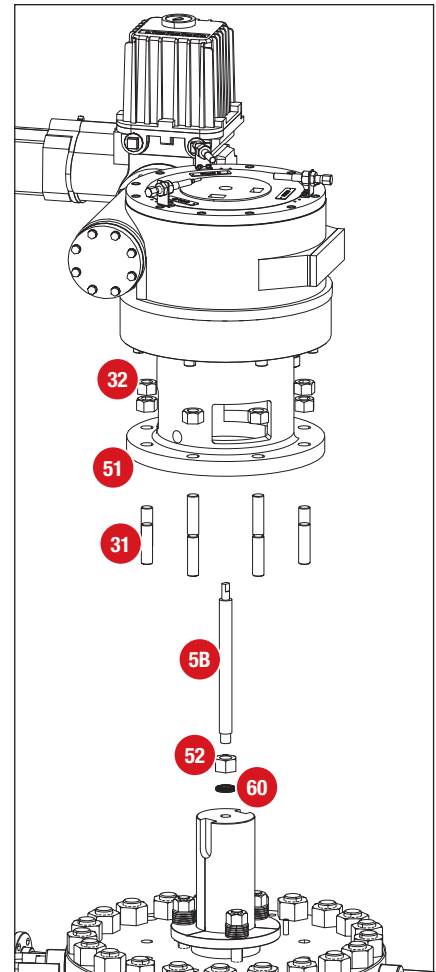
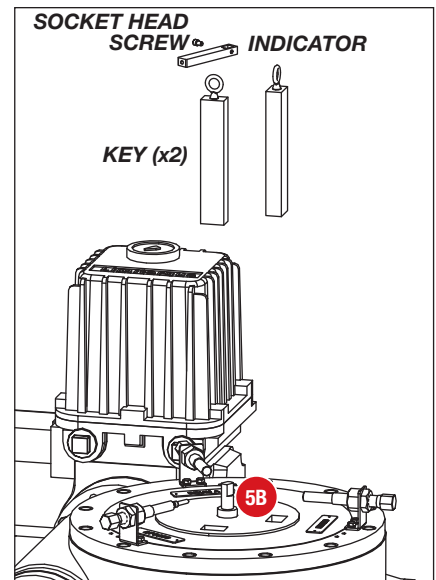
Remove mounting adaptor hex nuts **32**.

Lift operator and mounting adaptor assembly **51** straight up and off the valve.

Note: Use nylon straps around sturdy section of operator or adaptor.

Remove mounting adaptor studs **31** to provide clear access to packing area.

Remove hex nut **52**, indicator rod **5B**, and wedge lock washer **60**.



Disassembly

4 REMOVE GLAND FLANGE

Remove gland hex nuts **15**.

Remove live load springs **7C**.

Remove gland flange **07**.

Remove packing gland studs **12**.

5 REMOVE STEM PACKING

Using a small pick or scribe, carefully remove packing rings **9A** and anti-extrusion rings **9B** from around stem.

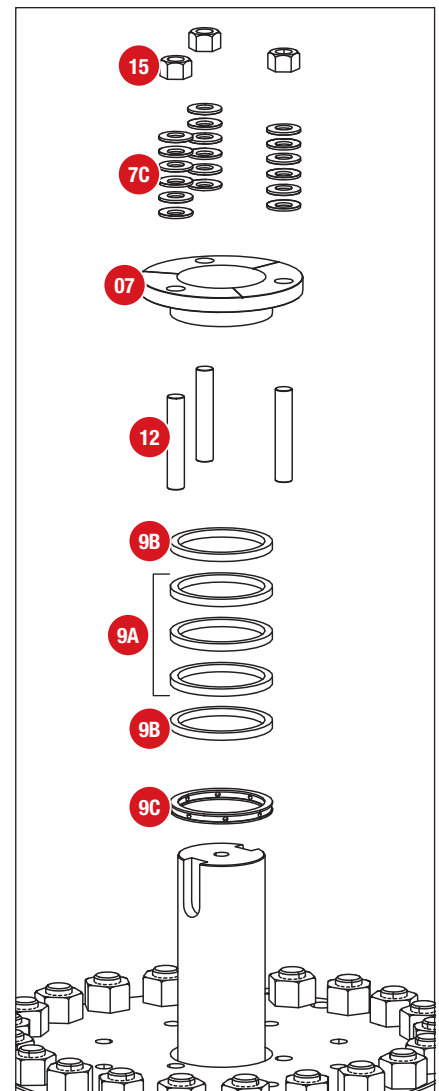
Make sure all packing material is removed. New packing material must be used for re-assembly.



CAUTION!

Do not scratch the stem or the packing bore in the body. Scratches could cause a leak.

Remove lantern ring **9C**.



6 REMOVE BONNET

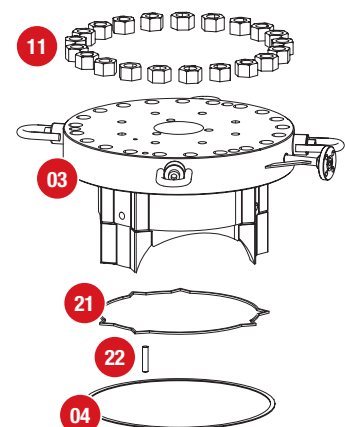
Loosen and remove body hex nuts **11**.

Attach chain to lifting eyes of bonnet **03**. Lift bonnet straight up to remove. Place aside with internal surfaces protected.

Remove graphite seal **21** and discard. Seal must be replaced at re-assembly.

Remove body gasket **04** and discard. Gasket must be replaced at re-assembly.

Remove bonnet alignment pin **22** and save for re-assembly.



Disassembly

7 REMOVE STEM SEAL SLEEVE AND STEM SEAL BEARING

Remove any remaining debris around stem seal sleeve area to prevent damage to stem packing area.

Remove stem seal sleeve **16A**.

Remove stem seal bearing **08**.

Inspect for any excessive wear or damage, and replace if needed. If parts are reusable, clean for later reuse.

8 REMOVE SPRINGS AND SEAT RINGS

Note: Depending on the severity of coke buildup, the springs may possibly be removed using an S-hook rod. For heavier coke buildup, a spring removal tool may be required to remove springs. It is recommended that spring and seat removal only be performed by authorized MOGAS service personnel. Contact MOGAS to learn more.

NOTICE

Make sure bore of ball is aligned to spring **1C** of selected port, and the S-hook rod is in contact with only the spring, not seat **1B**.

Secure an S-hook rod behind the spring **1C**. Attach to crane and lift spring straight up and out of body.

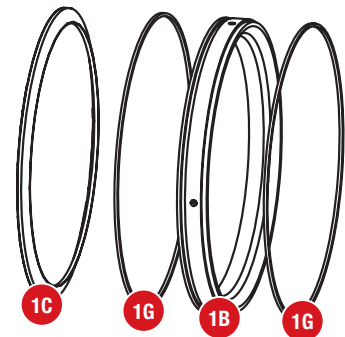
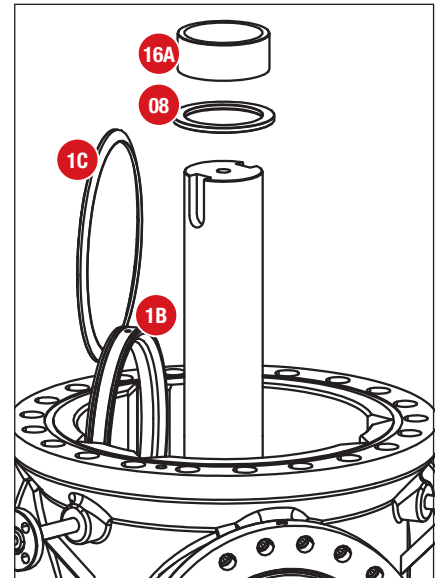
With spring removed, grab the seat ring **1B** by hand (or use the S-hook rod if needed) and lift seat ring straight up and out of body.

Repeat the spring and seat ring removal steps on remaining ports.

With seat rings **1B** removed, inspect for excessive wear or damage, and replace if needed. If seat rings are reusable, clean for later reuse.

Remove old graphite rings **1G** and discard. Graphite rings must be replaced at re-assembly.

Seat springs **1C** must be replaced at re-assembly.



9 REMOVE BALL AND STEM ASSEMBLY

Attach lifting lug to top of ball and stem assembly **1A**.

Lift straight up to remove from body.

Remove ball sleeve bearing **8E**. Sleeve bearing must be replaced at re-assembly.

Inspect ball and stem for any excessive wear or damage, and replace if needed. If part is reusable, clean for later reuse.

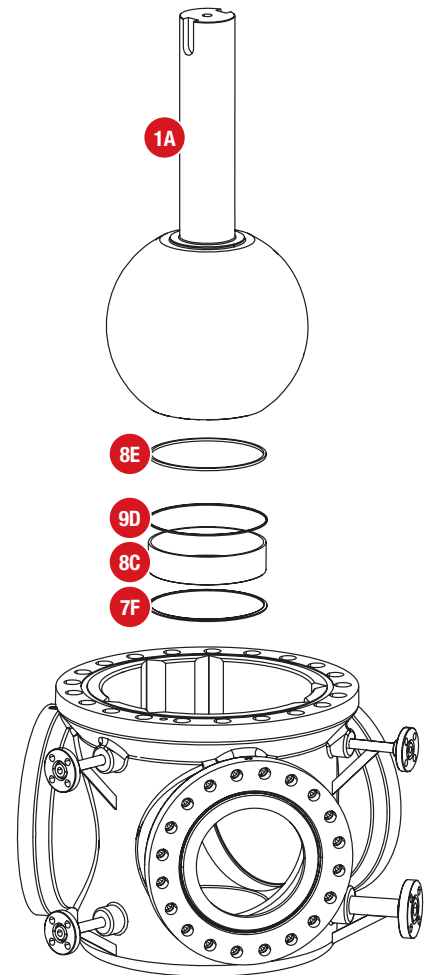
10 REMOVE BALL SLEEVE AND SPRING

Wash out any remaining coke around ball sleeve and sleeve spring.

Remove graphite seal ring **9D** and discard. Graphite seal ring must be replaced at re-assembly.

Remove ball sleeve **8C** from body. Inspect top of ball sleeve for any excessive wear or damage, and replace if needed. If part is reusable, clean for later reuse.

Remove sleeve spring **7F** from body and discard. Sleeve spring must be replaced at re-assembly.



Evaluation and Rework



CAUTION!

If you disassemble, rework and re-assemble this ball valve, **YOU WILL VOID YOUR WARRANTY.**

EVALUATION

Contact MOGAS for inspection and evaluation to determine if rework of components may be necessary.

SPARE PARTS KIT

If you have purchased a spare parts kit from MOGAS, prepare the parts for assembly now.

The soft goods kit should include any gaskets, seals, and packing required.

The trim change kit should include a ball and matched seats, in addition to any springs, bearings, rings, gaskets, seals, and packing required.

If you do not have a spare parts kit, refer to **Valve Item Reference Number** (pages 6–7) for a recommended spare parts list.

Note: Contact MOGAS or a MOGAS Authorized Repair Center to determine the spare parts and quantities required for your specific circumstance.

Re-Assembly



CAUTION!

If you disassemble, rework and re-assemble this ball valve, **YOU WILL VOID YOUR WARRANTY.**

Note: All seals, gaskets, springs and packing must be replaced with new materials during assembly to ensure proper valve operation. Refer to **Valve Item Reference Number** section for all parts identification.

1 INSPECT AND CLEAN ALL PARTS

Ensure that any soft goods kits and / or trim change kits contain the correct parts and quantities.

Ensure all parts that are to be re-used are clean and have no signs of excessive wear or other abnormalities.

2 POSITION VALVE BODY

Prior to assembly, verify that the valve body **02** is resting on a flat surface in the vertical position with the inlet-end down and body cavity upright.

3 INSTALL BALL SLEEVE AND SPRING

Place sleeve spring **7F** in the bottom of body sleeve bore.

Apply silicone or nonflammable adhesive to sleeve to grip new graphite seal ring **9D**.

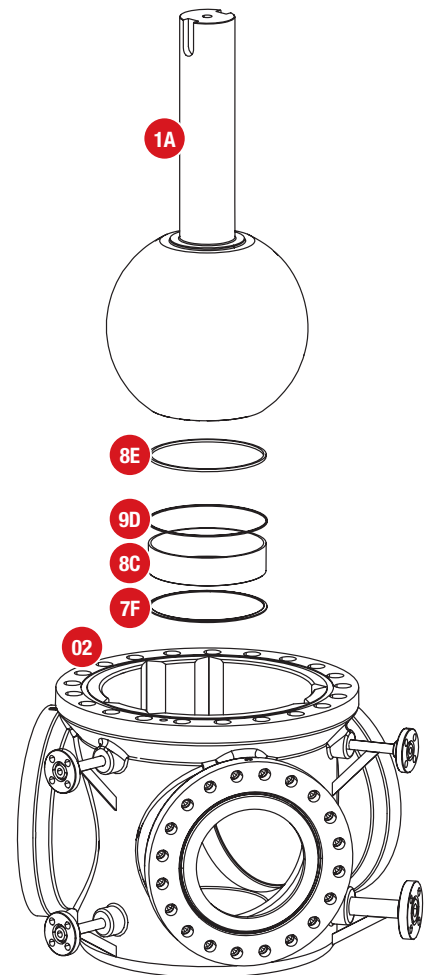
Place ball sleeve, with newly installed graphite seal ring, on top of spring.

4 INSTALL BALL AND STEM ASSEMBLY

Attach lifting eye to ball and stem assembly **1A**.

Insert new ball sleeve bearing **8E** into bottom of ball.

Using lifting eye, lower ball and stem assembly into body **02**, placing it on top of sleeve **8C**. Ensure bore of ball is aligned with any of three ports.



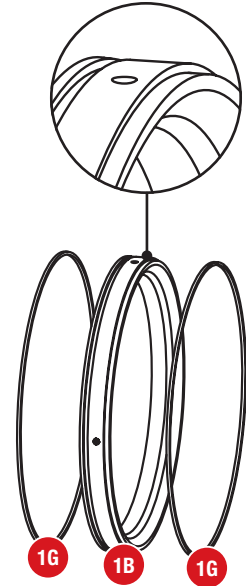
Re-Assembly

5 INSTALL GRAPHITE RINGS

Apply silicone or non-flammable adhesive to grooves in seat **1B**, to secure new graphite rings **1G** in place.

Repeat this process for remaining two seat rings.

DETAIL OF SEAT GROOVES



6 INSTALL SEATS AND SPRINGS

Place seat ring **1B** with new graphite rings into body seat pocket aligned with ball opening.

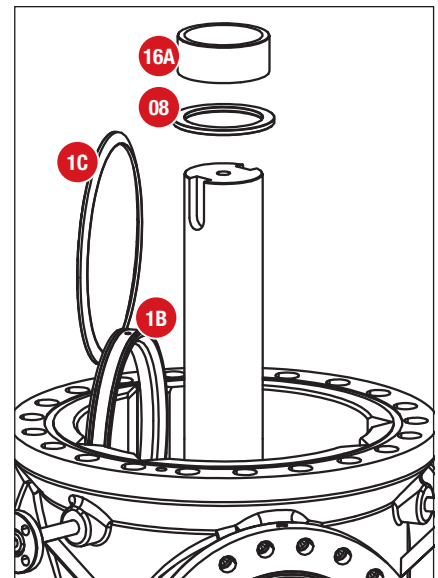
Repeat this process to install remaining two seat rings, rotating ball opening to align with each port.

With all of the seats in place, install springs **1C** behind seats.

7 INSTALL STEM SEAL BEARING AND STEM SEAL SLEEVE

Slide stem seal bearing **08** over the stem.

Slide stem seal sleeve **16A** over stem seal bearing.



Re-Assembly

8 INSTALL BONNET

If body studs **10** were removed, re-install to body **02** using anti-seize compound. Turn threaded stud until it reaches bottom, then back out one-half turn.

Install new body gasket **04** into groove in body face.

Attach chains to lifting lugs on bonnet **03** and lift to working height.

Apply silicone or non-flammable adhesive to groove in bonnet to secure new graphite seal **21** in place.

Insert bonnet alignment pin **22** into body **02**.

Align bolt holes with studs, and ensure bonnet purge openings are aligned with the body purge openings.

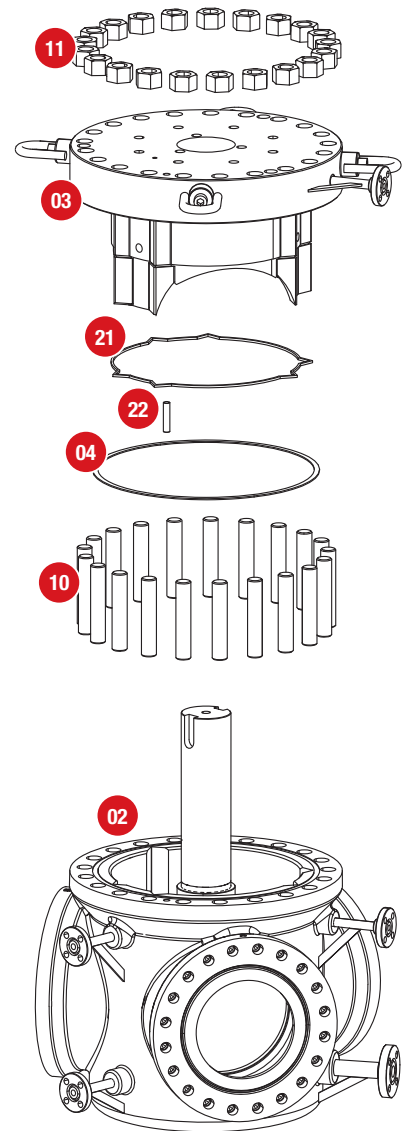
Lower bonnet **03** on top of body **02**.

Apply anti-sieze compound onto body studs.

Install nuts **11**, alternately tightening all nuts.

NOTICE

Torque the valve body bolting per the specifications included with the **test certificate** for each individual valve serial number.



Re-Assembly

9 CLEAN PACKING BOX

Before installing the new packing, make sure the packing box is clean. If needed, use an air hose to clean debris from packing box before installing new packing rings.



CAUTION!

Always wear a face shield or goggles to protect eyes from flying debris.

10 PREPARE PACKING RING SET

The new packing ring set will contain five rings total, (two anti-extrusion rings **9B** and three packing rings **9A**).

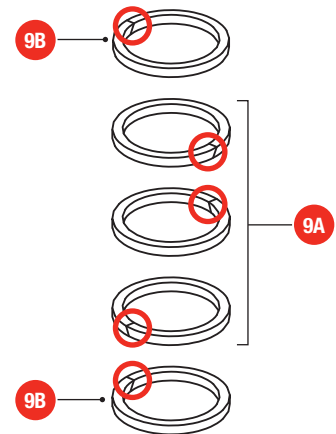
Note: The rings must be installed in the order shown.



CAUTION!

If you have rings that contain skive cuts (see illustration), the location of **each** skive cut must be staggered or alternated during installation. This is done to prevent formation of a possible leak path.

THIS WILL AFFECT THE VALVE WARRANTY.



ALTERNATING SKIVE CUT POSITIONING.

8 INSTALL PACKING

Note: Applying a spray lubricant to packing ring surfaces may ease the installation process.

With bonnet in place, install lantern ring **9C**.

Install packing rings around stem **1A** one at a time (one anti-extrusion ring **9B** first, then three stem packing rings **9A**, then the final anti-extrusion ring **9B**) using the gland flange **07** as a packing tool to stuff each packing ring all the way down against the previous ring.

Install gland studs **12** into bonnet **03**, using anti-seize compound.

Install gland flange **07** over stem and gland studs **12**, on top of packing.

Install spring discs (live loading) **7C** over gland studs.
Note: Spring discs must be installed in opposing pairs.

Apply anti-seize compound onto gland studs **12** and gland nuts **15**.

Install gland nuts **15**, and torque all nuts **evenly** per the specifications included with the **test certificate** for each individual valve serial number.



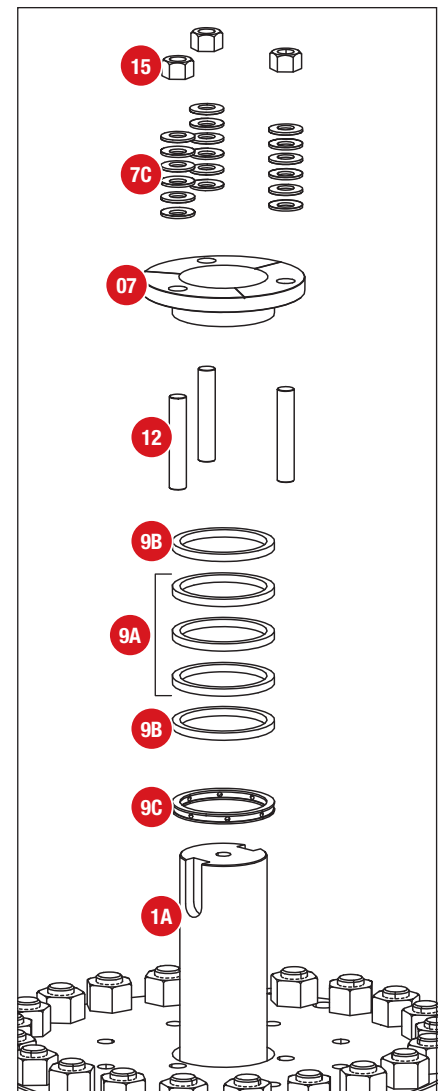
CAUTION!

The gland flange **must** be pulled down evenly to prevent “cocking” or side loading, as this could cause damage to the packing and prevent the valve from operating properly.

Watch the gland flange to ensure that it remains **perpendicular** to the stem, and the gap around the stem remains **concentric** during the tightening process.

Do not over-tighten nuts. Torque all nuts **evenly** per the specifications included with the **test certificate** for each individual valve serial number.

THIS WILL AFFECT THE VALVE WARRANTY.



Re-Assembly

9 INSTALL TOP WORKS ASSEMBLY

Note: If the operator and top works were removed earlier as an assembly, the assembly can be re-installed at this time, using alignment pin 30 to ensure proper orientation. Otherwise, the top works must be assembled as follows.

Install mounting flange bolting **31** to bonnet **03** using anti-seize compound. Turn threaded stud until it reaches bottom, then back out one-half turn.

Install alignment stud **30** to bonnet **03** using same procedure.

Place mounting flange spool **51** over bolting. Install mounting flange nuts **32** using anti-seize compound.

Install hex nut **52** onto indicator rod **5B**. Place wedge lock washer **60** on top of stem. Thread indicator rod **5B** into the top of stem, aligning flat of indicator rod with ball bore. Tighten hex nut **52** to secure the position.

Install flange bushing **16** into mounting flange spool **51**. Align key slots of stop plate **58** with key slots of stem, then insert stop plate **58** into flange bushing **16**.

Insert keys **06** into key slots of stop plate **58** and stem.

With stop plate in place, insert stem adaptor pins **68** into stop plate **58**. Place stem adaptor **13** on top of stop plate.

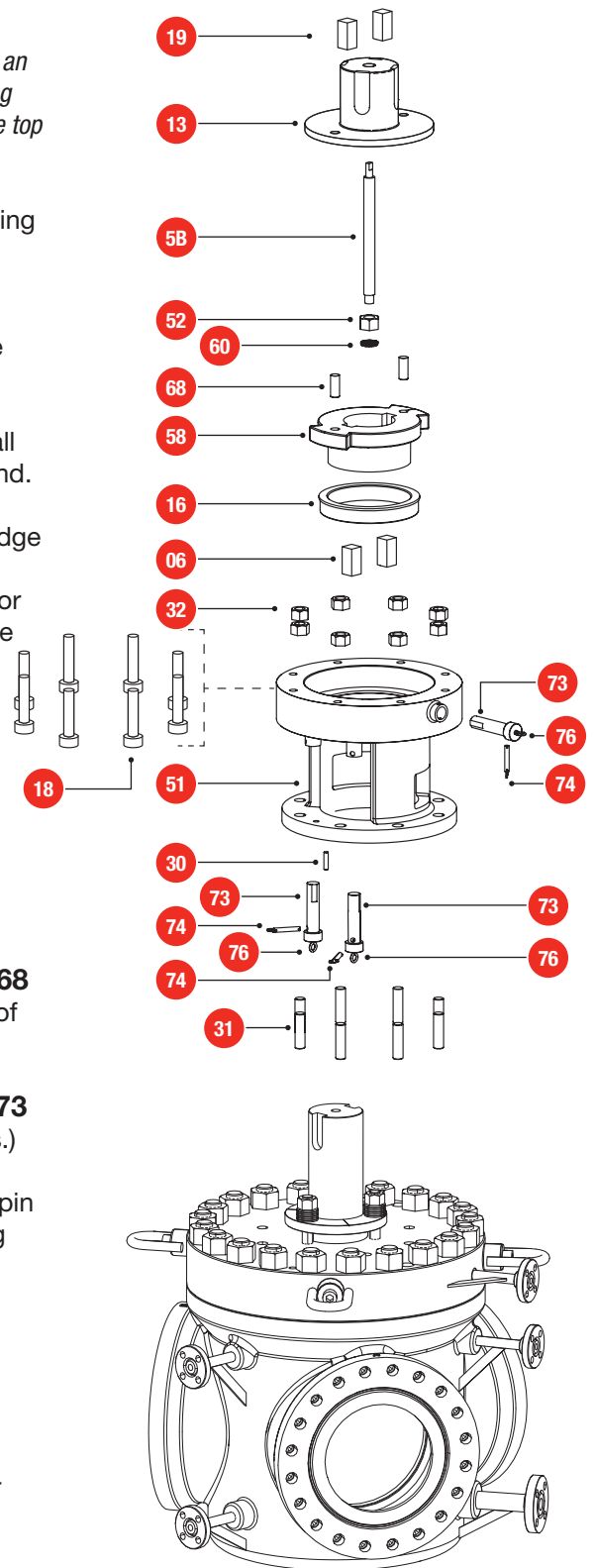
Insert eyebolts **76** into stop pins. Insert stop pins **73** into collars located in mounting flange (3 locations.)

Secure stop pins in place by aligning hole of stop pin to hole of collars in mounting flange, then inserting quick release pins **74** into stop pin holes.

Add both actuator keys **19**.

Install actuator.

Note: The valve is now ready for operator installation per manufacturer's procedures. It is recommended that operator installation only be performed by authorized MOGAS service personnel.



Note: These procedures outline the general requirements for storage of MOGAS valves.

SHORT-TERM STORAGE

MOGAS valves are shipped in seaworthy export packed wooden crates that are plastic lined. For short-term storage, valves shall remain stored in their shipping crates, or on their pallets, with the lids secured.

Valves are shipped with corrosion-resistant paint and desiccant dries (dryer bags) for storage up to six months.

All protective covers and plastic liners should remain in place.

REMOVING VALVE FROM SERVICE

Before valve is removed from line, ensure bore of ball is aligned with any of three ports to prevent internal damage to valve components.

Once removed, the valve should be placed in a vertical position, or raised at an angle. The bore of the valve should be either steamed cleaned or power washed to remove slurry and debris.

The valve should be allowed to drain and dry. A petroleum-based rust inhibitor should be applied through the bore of the valve immediately after the valve is dry.

LONG-TERM STORAGE

For long-term storage, the internal parts of carbon and alloy steel valves should be sprayed with a rust preventative.

Bore protectors need to be secured to each end of the valve to prevent any foreign debris from entering the valve. It is recommended to place desiccant dryer bags inside the valve before storage.

The valve should be stored in the vertical position, out of the weather (inside), until repairs can be made.

Return Merchandise Authorizations (RMA)

All valve or valve parts that are **returned** require a Return Merchandise Authorization (RMA).

Please have the following information available prior to submitting an RMA request:

- Serial number
- End user
- Total estimated hours in service
- Application specifics (where the valve is used)
- Media (what goes through the valve)
- Total estimated cycles (from last installation)
- Operating temperature (max. F)
- Operating pressure (max. PSI)
- Actuator specifics

Note: Valve information is provided on a nameplate wire-fastened to body for easy access.

Contact the MOGAS Service department to obtain authorization and to receive shipping instructions. The RMA request may also be submitted online by accessing the **Service** page of our website (www.mogas.com).

Service Competency

This instruction and operations manual is intended to guide those experienced personnel in the operation of this equipment. Any questions or clarifications should be made directly to MOGAS per the contact information given below.

Operators of this valve should be proficient with measuring equipment, tools and the machinery required to perform maintenance on MOGAS valves, and the ability to understand related documents on safety, operating and maintenance instructions/ manuals, and MOGAS machine drawings.

Service Contact

MOGAS Service may be reached
24 hours per day / 7 days per week.

Telephone: **+1 844 6-GET-MORE**

Email: **service@mogas.com**

Severe Service

The MOGAS Definition

- Extreme temperatures
- High pressures
- Abrasive particulates
- Acidic products
- Heavy solids build-up
- Critical plant safety
- Large pressure differentials
- Velocity control
- Noise control

MOGAS INDUSTRIES, INC.

Headquarters

14330 East Hardy Road
Houston, TX, USA 77039-1405
Phone: +1.281.449.0291
Fax: +1.281.590.3412
E-mail: mogas@mogas.com

AUSTRALIA

Phone: +61 (0)8.9456.3533

CANADA

Phone: +1 780.436.4485

CHINA

Phone: +86 (0)10.8454.9478

EUROPE

Phone: +44 (0)116.279.3367

MIDDLE EAST

Phone: +971 (0)4.880.8787

INDIA

Phone: +91 9910323201

To locate a sales and service
center in your area, visit us
online at www.mogas.com.

